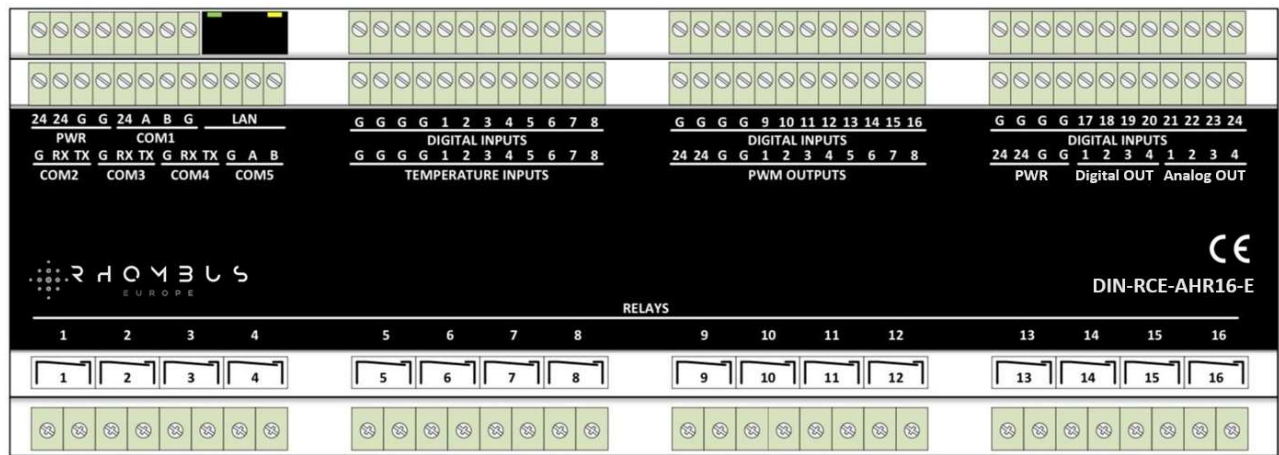


RHOMBUS

EUROPE



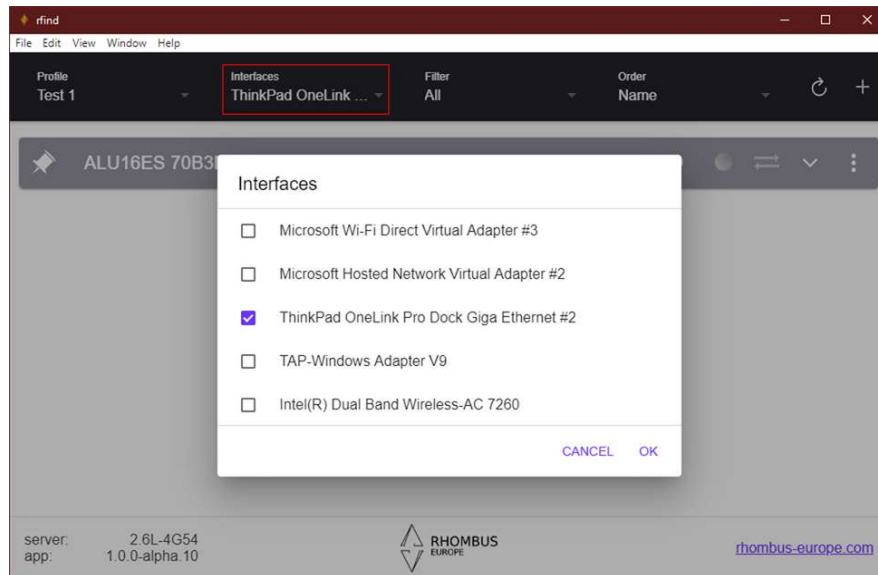
RF Find Manual

General Information

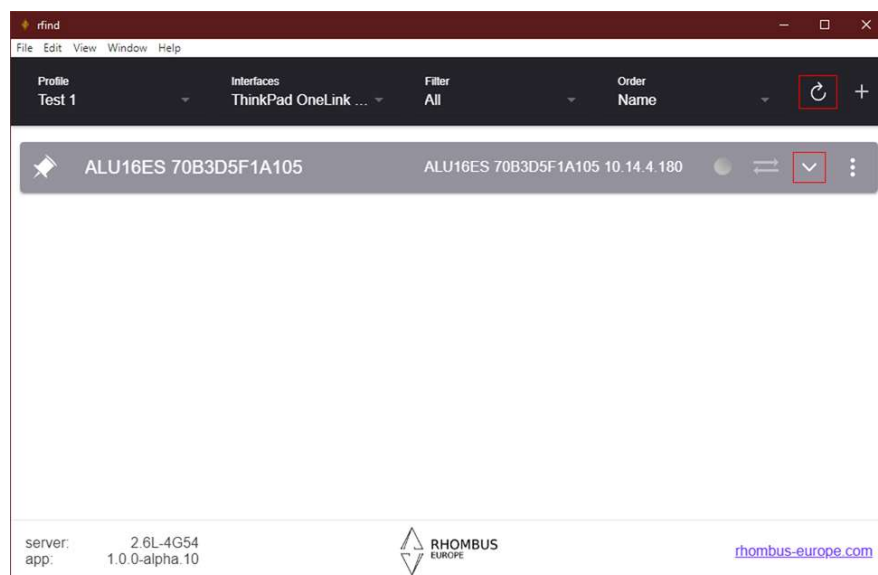
About

RF Find software can Set and Edit IP address of the AHD or any LAN (Type-E) extender unit. There are 4 Basic steps how to make it done:

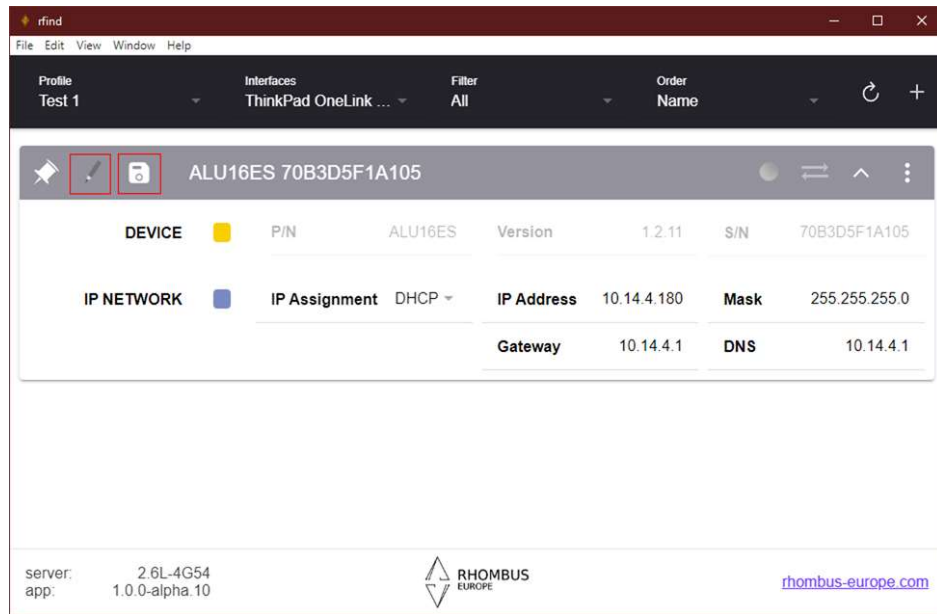
Step1: After application startup you need select network interface that is connected to Rhombus device. Click on „Interfaces" in the header.



Step 2: It can take up to 5 seconds to scan devices. To refresh shown data, please use rounded pointer icon in up right corner. Then you should see all devices connected. Below main bar menu there is down pointer icon, that expands details.

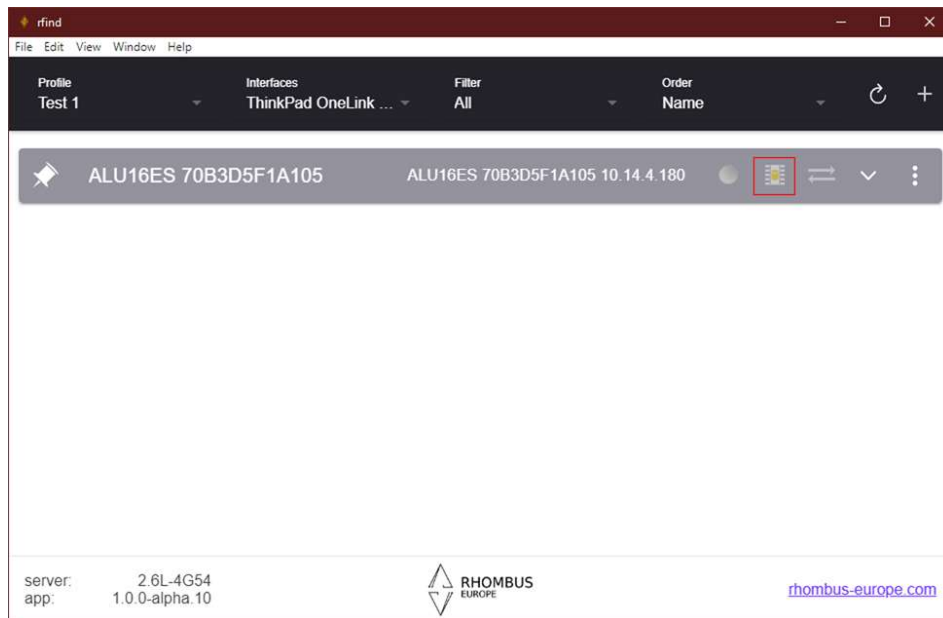


Step 3: Use **pencil icon** to enable edit. Change requested IP configuration and click **floppy disk icon** to upload it into device.



Step 4: It takes up to 5 seconds for upload, testing and persisting IP configuration. Progress is displayed by **chip icon**.

- Refresh view and wait until chip icon disappears. After that configuration is persisted in device.



Optional: If you have more devices connected to network, you can turn on ID lamp to be sure which one you are working with.

